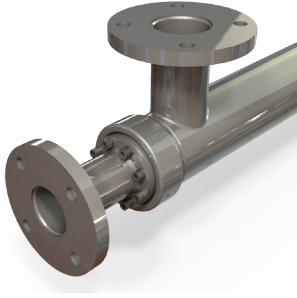


INDUSTRIAL DOUBLE TUBE HEAT EXCHANGERS WITH REMOVABLE TUBE

HRS DTR SERIES



The HRS DTR Series is a complete stainless steel double tube heat exchanger designed for industrial and environmental applications. The product flows through the inner tubes and the service fluid flows through the surrounding shell. As a result of its geometry, the DTR Series has a continuous free-pass cross section allowing large particles to be processed and reduces the risk of product blockages.

The removable inner tube allows for effective cleaning of both shell and tube, making it ideal for product to product applications. Using our corrugation technology, heat transfer and efficiency are increased over standard smooth tube heat exchangers. In addition, potential fouling is minimized.



TECHNICAL DATA

APPLICATIONS

Sludge Heating/Cooling & Pasteurization
Digester Heating
Sludge-to-Sludge Heat Recovery

SURFACE FINISH

External: Matt
Internal: Matt

STANDARD MATERIALS OF CONSTRUCTION

Service Side: AISI 316L Stainless Steel
Product Side: AISI 316L Stainless Steel
Other material options available

STANDARD DESIGN CONDITIONS

Service Side: 147 PSI/365°F
Product Side: 147 PSI/365°F

STANDARD CONNECTIONS

Service Side: Flange
Product Side: Flange
All flange types available

FEATURES

- Corrugated tubes for increased heat transfer
- Multiple units can be interconnected and have the option of frame mounting, insulation and cladding in stainless steel

RANGE

MODELS	LENGTHS (ft)	SURFACE AREA (ft ²)	SERVICE SIDE CONNECTION	PRODUCT SIDE CONNECTION	MAX FLOW SERVICE (gpm)	MAX FLOW PRODUCT (gpm)	SERVICE SIDE VOLUME (gal)	PRODUCT SIDE VOLUME (gal)
DTR 51/25	10 - 20	4	1.5"	0.5"	57	18	2	1
DTR 64/38	10 - 20	7	1.5"	1"	75	44	3	2
DTR 76/51	10 - 20	10	1.5"	1.5"	79	79	4	3
DTR 104/64	10 - 20	12	2.5"	2"	189	128	8	4
DTR 104/76	10 - 20	14	2.5"	2.5"	145	181	6	7
DTR 129/104	10 - 20	19	3"	3"	163	339	7	12
DTR 168/129*	10 - 20	26	4"	4"	242	528	12	19

The surface area and volumes shown are for 20ft length models. *DTR 168/129: the pressure for this unit cannot be more than 72.5 PSI.

DESIGN CODE AND COMPLIANCE

PD 5500, PED 2014/68/EU, ASME | TR CU 032, DOSH Compliant