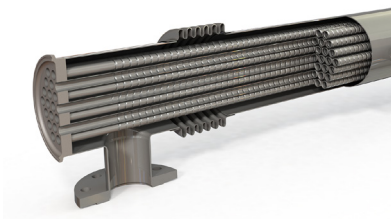


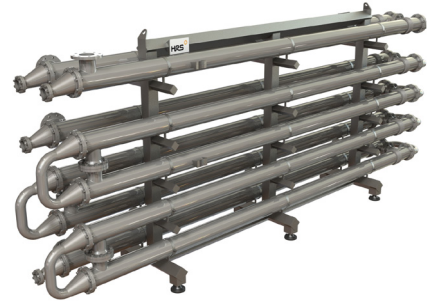
HYGIENIC MULTITUBE HEAT EXCHANGERS

HRS MI SERIES



The HRS MI Series is complete stainless steel shell and tube heat exchanger designed for hygienic applications. The product flows through the inner tubes and the service fluid flows through the surrounding shell.

The HRS MI Series is an ideal heat exchanger for pasteurisation applications. Using HRS corrugation technology, both heat transfer and efficiency are increased over standard smooth tube heat exchangers. In addition, potential fouling is minimised.



TECHNICAL DATA

APPLICATIONS

Low-Medium Viscosity Fluids
Food Industry Applications

SURFACE FINISH

External: Polished
Internal: <math><0.8\mu</math>
Other surface finishes available

STANDARD MATERIALS OF CONSTRUCTION

Service Side: AISI 304 Stainless Steel
Product Side: AISI 316L Stainless Steel
Other material options available

STANDARD DESIGN CONDITIONS

Service Side: 10 bar/185°C
Product Side: 10 bar/185°C

STANDARD CONNECTIONS

Service Side: Flange
Product Side: Clamp
All flange & clamp types available

FEATURES

- Corrugated tubes for increased heat transfer
- Bellows are fitted to absorb differential expansion between shell and inner tube
- Multiple units can be interconnected and have the option of frame mounting, insulation and cladding in stainless steel

RANGE

MODELS	LENGTHS (m)	SURFACE AREA (m ²)	SERVICE SIDE CONNECTION	PRODUCT SIDE CONNECTION	MAX FLOW SERVICE (m ³ /hr)	MAX FLOW PRODUCT (m ³ /hr)	SERVICE SIDE VOLUME (l)	PRODUCT SIDE VOLUME (l)
MI 7 76/18	3 - 6	2.3	DN40	2.5"	16	13	14.4	8.3
MI 12 89/16	3 - 6	3.6	DN50	3"	27	17	19.2	10.9
MI 12 104/18	3 - 6	4.3	DN65	4"	39	25	27	15.4
MI 21 114/16	3 - 6	6.2	DN65	4"	39	31	31.6	19.1
MI 21 129/18	3 - 6	7	DN65	6"	39	39	41	25
MI 32 154/18	3 - 6	10.7	DN80	6"	76	62	56.7	38

The surface area and volumes shown are for 6m length models. Nozzle volumes are included.

DESIGN CODE AND COMPLIANCE

PD 5500, PED 2014/68/EU, ASME | FDA, 3A, TR CU 032, DOSH Compliant