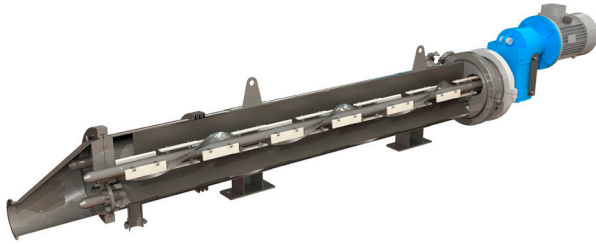


## ROTATING SCRAPED SURFACE HEAT EXCHANGERS

### HRS R SERIES



The HRS R Series scraped surface heat exchanger has been developed for the more challenging heat transfer applications and is suitable for both hygienic and industrial applications.

Each inner tube contains a scraper bar fitted with a helical screw which rotates at high speed and enhances flow through the tube whilst reducing pressure drop. In addition, the continuous scraping action eliminates fouling on the inner tube wall, ensuring the heat transfer area is clean at all times.

## TECHNICAL DATA

### APPLICATIONS

Viscous and Fouling Fluids  
Heating  
Cooling  
Evaporation  
Crystallisation

### SURFACE FINISH

External: Polished  
Internal: <0.8µ

### STANDARD MATERIALS OF CONSTRUCTION

Service Side: AISI 304 Stainless Steel  
Product Side: AISI 316L Stainless Steel  
*All other material options available*

### STANDARD DESIGN CONDITIONS

Service Side: 10 bar/185°C  
Product Side: 21 bar/185°C

### STANDARD CONNECTIONS

Service Side: Flange  
Product Side: Clamp  
*All flange & clamp types available*

### FEATURES

- Continuous scraping action enhances mixing of highly viscous products
- Spiral blade and scraper design reduces pressure drop, with improved heat transfer
- Multitube option for reduced footprint, energy consumption and operating costs
- Unique sealing system enables removal and replacement of individual tubes
- Scrapers are available in metal detectable material
- Multipass version available

### RANGE

MODELS	LENGTHS (m)	SURFACE AREA (m <sup>2</sup> )	SERVICE SIDE CONNECTION	PRODUCT SIDE CONNECTION	VOLUME PRODUCT SIDE (l)	MOTOR SIZE (kW)
R 1/1 - R 1/2	1 - 2	0.35 - 0.7	DN65	2.5"	8.2 - 16.8	4
R 3/1 - R 3/2	1 - 2	1.05 - 2.1	DN65	2.5 - 3"	37.3 - 58.2	15
R 6/1 - R 6/2	1 - 2	2.1 - 4.2	DN80	3 - 4"	74.5 - 116.3	30

Units can be installed vertically and horizontally. ASME version has matt external finish.

### DESIGN CODE AND COMPLIANCE

PD 5500, PED 2014/68/EU, 2014/34/EU (ATEX), 2006/42/CE, ASME | FDA, 3-A, TR CU 032, DOSH Compliant