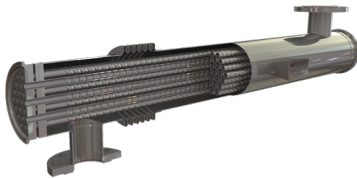


## DOUBLE TUBEPLATE INDUSTRIAL HEAT EXCHANGERS

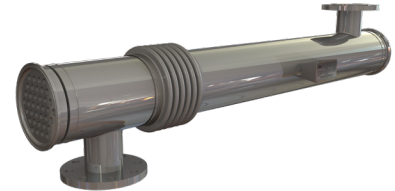
### HRS SI SERIES



The HRS SI Series is a multitube shell and tube heat exchanger designed with the added security of a double tubeplate, providing leak detection to avoid cross contamination between the service and product fluids.

The HRS SI series is perfect for industrial applications.

Using our corrugated tube technology, heat transfer and efficiency are increased over standard smooth tube heat exchangers. In addition, potential fouling is minimized.



## TECHNICAL DATA

### APPLICATIONS

Chemicals  
River Water  
Oil

### SURFACE FINISH

External: Matt  
Internal: Matt

### STANDARD MATERIALS OF CONSTRUCTION

Service Side: AISI 304/316L Stainless Steel  
Product Side: AISI 316L Stainless Steel  
*Other material options available*

### STANDARD DESIGN CONDITIONS

Service Side: 147 PSI/365°F  
Product Side: 147 PSI/365°F

### STANDARD CONNECTIONS

Service Side: Flange  
Product Side: Clamp/Flange  
*All flange & clamp types available*

### FEATURES

- Corrugated tubes for increased heat transfer
- Bellows are fitted to absorb differential expansion between shell and inner tubes
- Multiple units can be interconnected and mounted in a frame
- Multipass version available

### RANGE

MODELS	LENGTHS (ft)	SURFACE AREA (ft <sup>2</sup> )	SERVICE SIDE CONNECTION	PRODUCT SIDE CONNECTION	MAX FLOW SERVICE (gpm)	MAX FLOW PRODUCT (gpm)	VOLUME SERVICE (gal)	VOLUME PRODUCT (gal)
SI 4 64/18	2 - 20	14	1.5"	2"	75	26	4	2
SI 7 76/18	2 - 20	25	1.5"	2.5"	75	44	7	4
SI 13 104/18	2 - 20	46	2.5"	3"	176	88	12	6
SI 21 129/18	2 - 20	73	3"	4"	242	141	19	12

By standard the following lengths can be supplied: 2/3/5/6/10/20 ft. The surface area and volumes shown are for 20ft length models.

### DESIGN CODE AND COMPLIANCE

PD 5500, PED 2014/68/EU, ASME | TR CU 032, DOSH Compliant