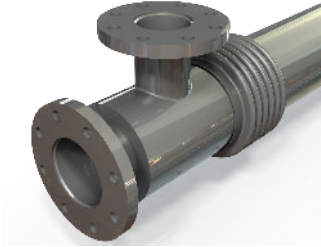


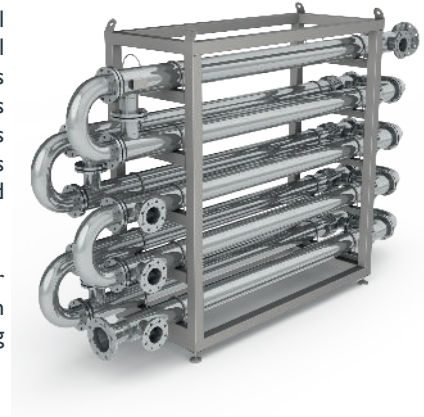
## INDUSTRIAL DOUBLE TUBE HEAT EXCHANGERS

### HRS DTI SERIES



The HRS DTI Series is a complete stainless steel double tube heat exchanger designed for industrial and environmental applications. The product flows through the inner tubes and the service fluid flows through the surrounding shell. As a result of its geometry, the DTI Series has a continuous free-pass cross section allowing large particles to be processed and reduces the risk of product blockages.

Using our corrugation technology, both heat transfer and efficiency are increased over standard smooth tube heat exchangers. In addition, potential fouling is minimised.



## TECHNICAL DATA

### APPLICATIONS

Fluids Containing Fibres or particles  
Low - High Viscosity Fluids

### SURFACE FINISH

External: Matt  
Internal: Matt

### STANDARD MATERIALS OF CONSTRUCTION

Service Side: AISI 304 Stainless Steel  
Product Side: AISI 316L Stainless Steel  
*Other material options available*

### STANDARD DESIGN CONDITIONS

Service Side: 10 bar/185°C  
Product Side: 10 bar/185°C

### STANDARD CONNECTIONS

Service Side: Flange  
Product Side: Flange  
*All flange types available*

### FEATURES

- Corrugated tubes for increased heat transfer
- Bellows are fitted to absorb differential expansion between shell and tubes
- Multiple units can be interconnected and have the option of frame mounting, insulation and cladding in stainless steel

### RANGE

MODELS	LENGTHS (m)	SURFACE AREA (m <sup>2</sup> )	SERVICE SIDE CONNECTION	PRODUCT SIDE CONNECTION	MAX FLOW SERVICE (m <sup>3</sup> /hr)	MAX FLOW PRODUCT (m <sup>3</sup> /hr)	SERVICE SIDE VOLUME (l)	PRODUCT SIDE VOLUME (l)
DTI 51/25	3 - 6	0.4	DN40	DN15	13	4	8.2	2.5
DTI 64/38	3 - 6	0.6	DN40	DN25	17	10	10.3	5.7
DTI 76/51	3 - 6	0.9	DN40	DN40	18	18	14.1	11
DTI 104/64	3 - 6	1.1	DN65	DN50	43	29	29.7	16.9
DTI 104/76	3 - 6	1.3	DN65	DN65	33	41	21.5	24.8
DTI 129/104	3 - 6	1.8	DN80	DN80	37	77	26	46.4
DTI 168/129*	3 - 6	2.4	DN100	DN100	55	120	45.4	73.6

The surface area and volumes shown are for 6m length models. \* DTI 168/129: the pressure for this unit cannot be more than 5 bar.

### DESIGN CODE AND COMPLIANCE

PD 5500, PED 2014/68/EU, ASME | TR CU 032, DOSH Compliant