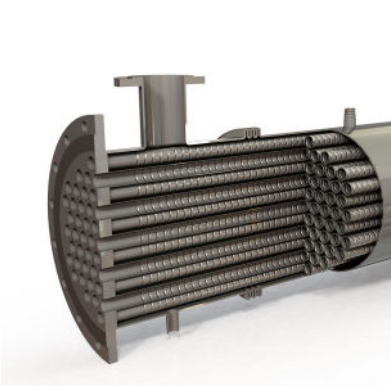


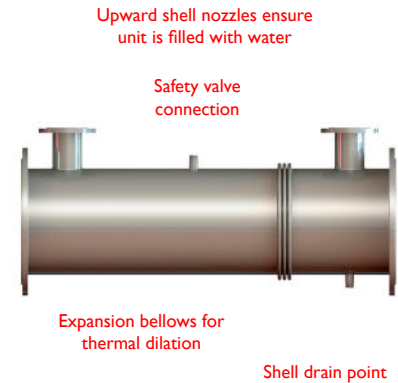


## GAS COOLING HEAT EXCHANGERS



The HRS G Series is a complete stainless steel multitube heat exchanger designed specifically for exhaust gas cooling and thermal recovery applications.

Similar to the HRS K Series, the exhaust gases flow through the interior tubes and the service fluid flows through the surrounding shell. Using our corrugation technology, heat transfer and efficiency are increased over standard smooth tube heat exchangers. In addition, potential fouling is minimised.



Upward shell nozzles ensure unit is filled with water

Safety valve connection

Expansion bellows for thermal dilation

Shell drain point

### TECHNICAL DATA

Heat Recovery from:  
Cogeneration Exhaust Gas  
Boiler Exhaust Gas  
Industrial Exhaust Gas/Flue Gas

External: Matt  
Internal: Matt

Service Side: AISI 304 Stainless Steel  
Product Side: AISI 316L Stainless Steel  
*Other material options available*

Service Side: 3 bar/550°C  
Product Side: 1 bar/550°C

Service Side: Flange  
Product Side: Tubeplate Flange  
*All flange types available*

- Corrugated tubes for increased heat transfer
- Bellows are fitted to absorb differential expansion between shell and inner tubes
- Multiple units can be interconnected

| MODELS       | NO. OF TUBES | LENGTHS (m) | SURFACE AREA (m <sup>2</sup> ) | SERVICE SIDE CONNECTION | PRODUCT SIDE CONNECTION | MAX FLOW SERVICE (m <sup>3</sup> /hr) | SERVICE SIDE VOLUME (l) | PRODUCT SIDE VOLUME (l) |
|--------------|--------------|-------------|--------------------------------|-------------------------|-------------------------|---------------------------------------|-------------------------|-------------------------|
| G 31 273/34  | 31           | 1.5 - 3     | 9.7                            | DN65                    | DN250                   | 45                                    | 82.8                    | 73.3                    |
| G 42 324/34  | 42           | 1.5 - 3     | 13.2                           | DN80                    | DN300                   | 55                                    | 121.1                   | 99.3                    |
| G 73 406/34  | 73           | 1.5 - 3     | 22.9                           | DN100                   | DN400                   | 85                                    | 176.6                   | 172.6                   |
| G 90 457/34  | 90           | 1.5 - 3     | 28.3                           | DN100                   | DN450                   | 85                                    | 231.3                   | 212.7                   |
| G 114 508/34 | 114          | 1.5 - 3     | 35.8                           | DN125                   | DN500                   | 130                                   | 280.5                   | 269.5                   |
| G 168 609/34 | 168          | 1.5 - 3     | 52.7                           | DN150                   | DN600                   | 180                                   | 395.3                   | 397.1                   |
| G 270 762/34 | 270          | 1.5 - 3     | 85.8                           | DN200                   | DN750                   | 320                                   | 606.2                   | 638.2                   |

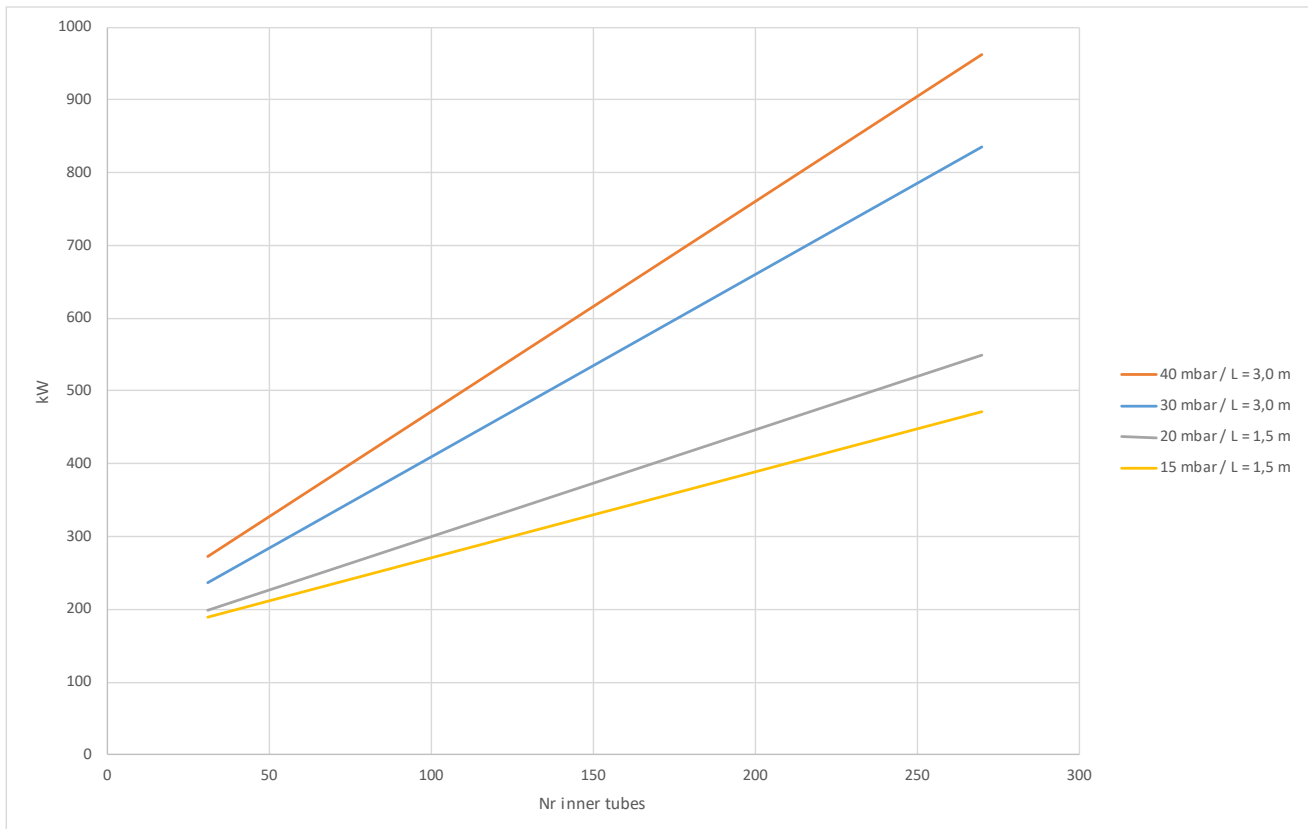
Custom lengths between 1.5 and 3m can be supplied. The surface area and volumes shown are 3m lengths model. Shell side nozzle volumes are included.

PD 5500, PED 2014/68/EU, ASME | TR CU 032, DOSH Compliant

HRS HEAT EXCHANGERS | [hrs-heatexchangers.com](http://hrs-heatexchangers.com) | UK Office +44 (0)1923 232335 | [info@uk.hrs-he.com](mailto:info@uk.hrs-he.com)



## GAS COOLING HEAT EXCHANGERS



Maximum heat recovery for cooling of 500°C exhaust gas with water from 80 to 90°C