



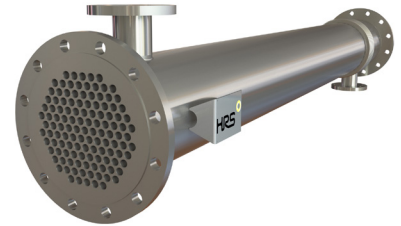
MULTITUBE HEAT EXCHANGERS

HRS C SERIES



The HRS C Series is a complete stainless steel shell and tube heat exchanger designed for industrial use, based on our K Series but with smaller tubes making the unit more compact.

The product flows through the inner tubes and the service fluid flows through the surrounding shell. The HRS C Series is an ideal heat exchanger for steam-to-water applications such as CIP heating and low viscosity products. Using HRS corrugation technology, heat transfer and efficiency are increased over standard smooth tube heat exchangers. In addition, effects of fouling are minimized.



TECHNICAL DATA

APPLICATIONS

Low Viscosity Fluids
CIP Heating
General Industrial Applications

STANDARD MATERIALS OF CONSTRUCTION

Service Side: AISI 304 Stainless Steel
Product Side: AISI 316L Stainless Steel
Other material options available

STANDARD CONNECTIONS

Service Side: Flange
Product Side: Tubeplate Flange
All flange types available

RANGE

MODELS	LENGTHS (ft)	SURFACE AREA (ft ²)	SERVICE SIDE CONNECTION	PRODUCT SIDE CONNECTION	SERVICE SIDE VOLUME (gal)	PRODUCT SIDE VOLUME (gal)
C 7 51/12	2 - 20	17	1"	1.5"	1.6	0.9
C 13 76/12	2 - 20	31	1.5"	2.5"	4.4	1.6
C 19 89/12	2 - 20	46	2"	3"	5.7	2.4
C 37 114/12	2 - 20	89	3"	4"	8.8	4.6
C 55 139/12	2 - 20	132	3"	5"	13.4	6.8
C 85 168/12	2 - 20	205	4"	6"	18.9	10.6
C 151 219/12	2 - 20	364	5"	8"	30.4	18.8
C 253 273/12	2 - 20	609	6"	10"	44.6	31.5

The following lengths can be supplied: 2/3/5/6/10/20 ft. The surface area and volumes shown are for 20ft length models. Nozzle volumes are included.

DESIGN CODE AND COMPLIANCE

PD 5500, PED 2014/68/EU, ASME | TR CU 032, DOSH Compliant

SURFACE FINISH

External: Matt
Internal: Descaled
Other surface finishes available

STANDARD DESIGN CONDITIONS

Service Side: 147 PSI/365°F
Product Side: 147 PSI/365°F

FEATURES

- Corrugated tubes for increased heat transfer
- Bellows are fitted to absorb differential expansion between shell and inner tubes
- Multiple units can be interconnected and mounted in a frame
- Polished version available