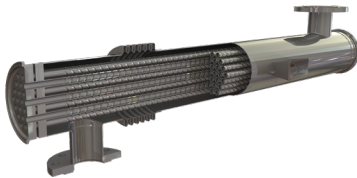


DOUBLE TUBEPLATE SANITARY HEAT EXCHANGERS

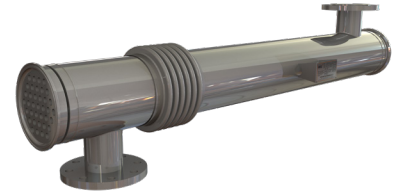
HRS SH SERIES



The HRS SH Series is a multitube shell and tube heat exchanger designed with the added security of a double tubeplate, providing leak detection to avoid cross contamination between the service and product fluids.

The HRS SH series is perfect for sanitary applications.

Using our corrugated tube technology, heat transfer and efficiency are increased over standard smooth tube heat exchangers. In addition, potential fouling is minimized.



TECHNICAL DATA

APPLICATIONS

Personal Care
Food and Beverages
Potable Water

SURFACE FINISH

External: Polished
Internal: <0.8 μ

STANDARD MATERIALS OF CONSTRUCTION

Service Side: AISI 304/316L Stainless Steel
Product Side: AISI 316L Stainless Steel
Other material options available

STANDARD DESIGN CONDITIONS

Service Side: 147 PSI/365°F
Product Side: 147 PSI/365°F

STANDARD CONNECTIONS

Service Side: Clamp
Product Side: Clamp
All flange & clamp types available

FEATURES

- Corrugated tubes for increased heat transfer
- Bellows are fitted to absorb differential expansion between shell and inner tubes
- Multiple units can be interconnected and mounted in a frame
- Multipass version available

RANGE

MODELS	LENGTHS (ft)	SURFACE AREA (ft ²)	SERVICE SIDE CONNECTION	PRODUCT SIDE CONNECTION	MAX FLOW SERVICE (gpm)	MAX FLOW PRODUCT (gpm)	VOLUME SERVICE (gal)	VOLUME PRODUCT (gal)
SH 4 64/18	2 - 20	14	1.5"	2"	75	26	4	2
SH 7 76/18	2 - 20	25	1.5"	2.5"	75	44	7	4
SH 13 104/18	2 - 20	46	2.5"	3"	176	88	12	6
SH 21 129/18	2 - 20	73	3"	4"	242	141	19	12

By standard the following lengths can be supplied: 2/3/5/6/10/20 ft. The surface area and volumes shown are for 20ft length models.

DESIGN CODE AND COMPLIANCE

PD 5500, PED 2014/68/EU, ASME BPE | FDA, TR CU 032, DOSH Compliant