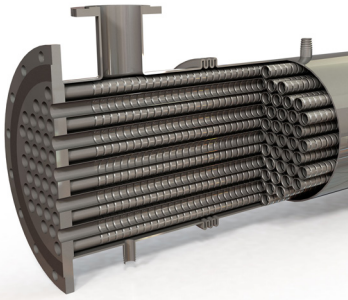


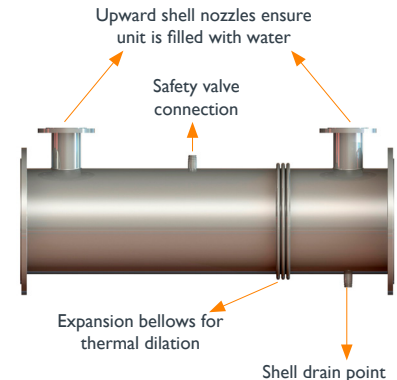
GAS COOLING HEAT EXCHANGERS

HRS G SERIES



The HRS G Series is a complete stainless steel multitube heat exchanger designed specifically for exhaust gas cooling and thermal recovery applications.

Similar to the HRS K Series, the exhaust gases flow through the interior tubes and the service fluid flows through the surrounding shell. Using our corrugation technology, heat transfer and efficiency are increased over standard smooth tube heat exchangers. In addition, potential fouling is minimised.



TECHNICAL DATA

APPLICATIONS

Heat Recovery from:
Cogeneration Exhaust Gas
Boiler Exhaust Gas
Industrial Exhaust Gas/Flue Gas

SURFACE FINISH

External: Matt
Internal: Matt

STANDARD MATERIALS OF CONSTRUCTION

Service Side: AISI 304 Stainless Steel
Product Side: AISI 316L Stainless Steel
Other material options available

STANDARD DESIGN CONDITIONS

Service Side: 3 bar/550°C
Product Side: 1 bar/550°C

STANDARD CONNECTIONS

Service Side: Flange
Product Side: Tubeplate Flange
All flange types available

FEATURES

- Corrugated tubes for increased heat transfer
- Bellows are fitted to absorb differential expansion between shell and inner tubes
- Multiple units can be interconnected

RANGE

| MODELS | NO. OF TUBES | LENGTHS (m) | SURFACE AREA (m ²) | SERVICE SIDE CONNECTION | PRODUCT SIDE CONNECTION | MAX FLOW SERVICE (m ³ /hr) | SERVICE SIDE VOLUME (l) | PRODUCT SIDE VOLUME (l) |
|--------------|--------------|-------------|--------------------------------|-------------------------|-------------------------|---------------------------------------|-------------------------|-------------------------|
| G 31 273/34 | 31 | 1.5 - 3 | 9.7 | DN65 | DN250 | 45 | 82.8 | 73.3 |
| G 42 324/34 | 42 | 1.5 - 3 | 13.2 | DN80 | DN300 | 55 | 121.1 | 99.3 |
| G 73 406/34 | 73 | 1.5 - 3 | 22.9 | DN100 | DN400 | 85 | 176.6 | 172.6 |
| G 90 457/34 | 90 | 1.5 - 3 | 28.3 | DN100 | DN450 | 85 | 231.3 | 212.7 |
| G 114 508/34 | 114 | 1.5 - 3 | 35.8 | DN125 | DN500 | 130 | 280.5 | 269.5 |
| G 168 609/34 | 168 | 1.5 - 3 | 52.7 | DN150 | DN600 | 180 | 395.3 | 397.1 |
| G 270 762/34 | 270 | 1.5 - 3 | 85.8 | DN200 | DN750 | 320 | 606.2 | 638.2 |

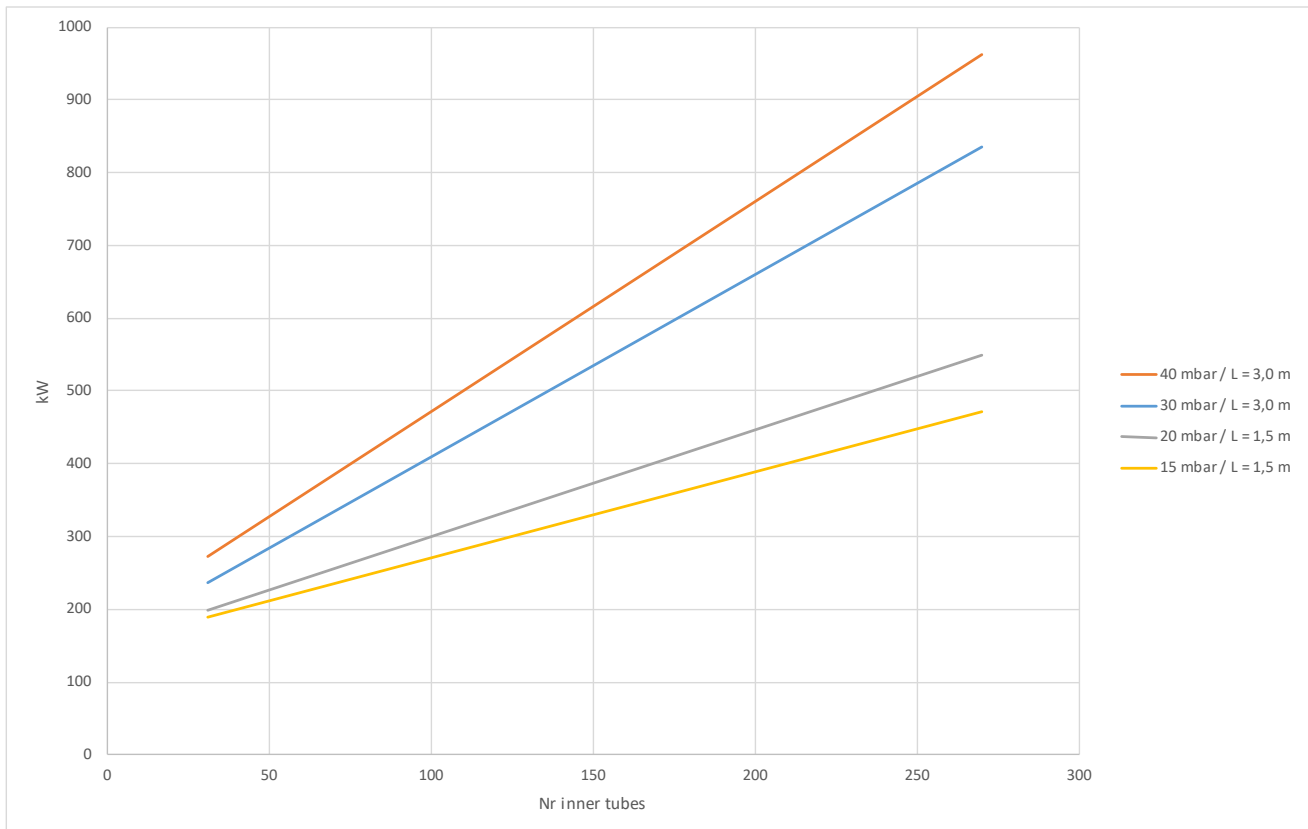
Custom lengths between 1.5 and 3m can be supplied. The surface area and volumes shown are 3m lengths model. Shell side nozzle volumes are included.

DESIGN CODE AND COMPLIANCE

PD 5500, PED 2014/68/EU, ASME | TR CU 032, DOSH Compliant

GAS COOLING HEAT EXCHANGERS

HRS G SERIES



Maximum heat recovery for cooling of 500°C exhaust gas with water from 80 to 90°C