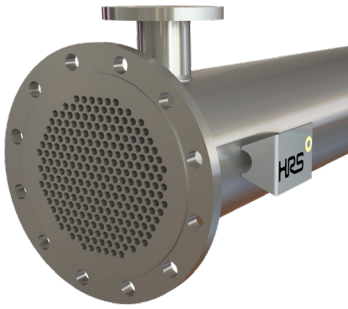


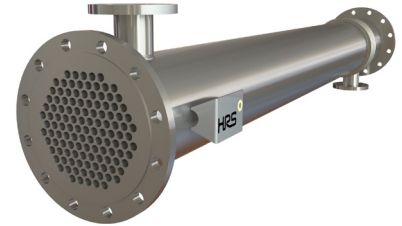
## MULTITUBE HEAT EXCHANGERS

### HRS C SERIES



The HRS C Series is a complete stainless steel shell and tube heat exchanger designed for industrial use, based on our K Series but with smaller tubes making the unit more compact.

The product flows through the inner tubes and the service fluid flows through the surrounding shell. The HRS C Series is an ideal heat exchanger for steam-to-water applications such as CIP heating and low viscosity products. Using HRS corrugation technology, heat transfer and efficiency are increased over standard smooth tube heat exchangers. In addition, effects of fouling are minimised.



## TECHNICAL DATA

### APPLICATIONS

Low Viscosity Fluids  
CIP Heating  
General Industrial Applications

### STANDARD MATERIALS OF CONSTRUCTION

Service Side: AISI 304 Stainless Steel  
Product Side: AISI 316L Stainless Steel  
*Other material options available*

### STANDARD CONNECTIONS

Service Side: Flange  
Product Side: Tubeplate Flange  
*All flange types available*

### RANGE

### SURFACE FINISH

External: Matt  
Internal: Descaled  
*Other surface finishes available*

### STANDARD DESIGN CONDITIONS

Service Side: 10 bar/185°C  
Product Side: 10 bar/185°C

### FEATURES

- Corrugated tubes for increased heat transfer
- Bellows are fitted to absorb differential expansion between shell and inner tubes
- Multiple units can be interconnected and mounted in a frame
- Polished version available

MODELS	LENGTHS (m)	SURFACE AREA (m <sup>2</sup> )	SERVICE SIDE CONNECTION	PRODUCT SIDE CONNECTION	SERVICE SIDE VOLUME (l)	PRODUCT SIDE VOLUME (l)
C 7 51/12	0.7 - 6	1.6	DN25	DN40	6.2	3.3
C 13 76/12	0.7 - 6	2.9	DN40	DN65	16.6	6.1
C 19 89/12	0.7 - 6	4.3	DN50	DN80	21.6	9
C 37 114/12	0.7 - 6	8.3	DN80	DN100	33.5	17.4
C 55 140/12	0.7 - 6	12.3	DN80	DN125	50.7	25.9
C 85 168/12	0.7 - 6	19	DN100	DN150	71.4	40.1
C 151 219/12	0.7 - 6	33.8	DN125	DN200	114.9	71.2
C 253 273/12	0.7 - 6	56.6	DN150	DN250	168.8	119.2

The following lengths can be supplied: 0.7/1/1.5/2/3/6 m. The surface area and volumes shown are for 6m length models. Nozzle volumes are included.

### DESIGN CODE AND COMPLIANCE

PD 5500, PED 2014/68/EU, ASME | TR CU 032, DOSH Compliant