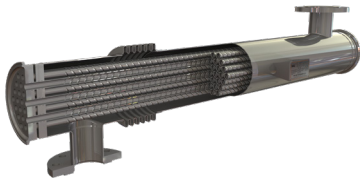


DOUBLE TUBEPLATE INDUSTRIAL HEAT EXCHANGERS

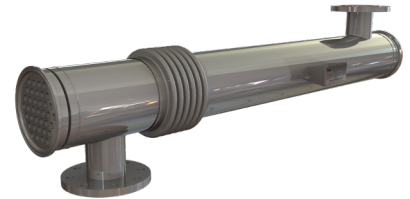
HRS SI SERIES



The HRS SI Series is a multitube shell and tube heat exchanger designed with the added security of a double tubeplate, providing leak detection to avoid cross contamination between the service and product fluids.

The HRS SI series is perfect for industrial applications.

Using our corrugation technology, heat transfer and efficiency are increased over standard smooth tube heat exchangers. In addition, potential fouling is minimised.



TECHNICAL DATA

APPLICATIONS

Chemicals
River Water
Oil

SURFACE FINISH

External: Matt
Internal: Matt

STANDARD MATERIALS OF CONSTRUCTION

Service Side: AISI 304/316L Stainless Steel
Product Side: AISI 316L Stainless Steel
Other material options available

STANDARD DESIGN CONDITIONS

Service Side: 10 bar/185°C
Product Side: 10 bar/185°C

STANDARD CONNECTIONS

Service Side: Flange
Product Side: Clamp/Flange
All clamp & flange types available

FEATURES

- Corrugated tubes for increased heat transfer
- Bellows are fitted to absorb differential expansion between shell and inner tubes
- Multiple units can be interconnected and mounted in a frame
- Multipass version available

RANGE

MODELS	LENGTHS (m)	SURFACE AREA (m ²)	SERVICE SIDE CONNECTION	PRODUCT SIDE CONNECTION	MAX FLOW SERVICE (m ³ /hr)	MAX FLOW PRODUCT (m ³ /hr)	SERVICE SIDE VOLUME (l)	PRODUCT SIDE VOLUME (l)
SI 4 64/18	0.7 - 6	1.3	DN40	DN50	17	6	14.6	8.3
SI 7 76/18	0.7 - 6	2.3	DN40	DN65	17	10	27.6	15.4
SI 13 104/18	0.7 - 6	4.3	DN65	DN80	40	20	44.8	22.6
SI 21 129/18	0.7 - 6	6.8	DN80	DN100	55	32	70.3	43.9

By standard the following lengths can be supplied: 0.7/1/1.5/2/3/6 m. The surface area and volumes shown are for 6m length models.

DESIGN CODE AND COMPLIANCE

PD 5500, PED 2014/68/EU, ASME | TR CU 032, DOSH Compliant